



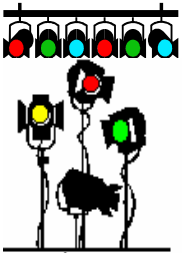
IOM-4020



**Total
Show Control**



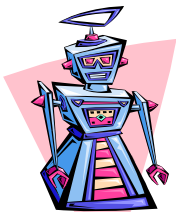
**Video
Playback**



**DMX
Lighting Control**



**Video & SMPTE
Time Code
Gen/Rcvr**



**Animatronics
Control**



**Digital Audio
Playback
& Control**

Media Pro[®] 4000

IOM-4020 Input Output Module

The IOM-4020 provides digital inputs and outputs for all types of animation, effects, indicators or switches requiring 24 vdc control. The optically isolated input points can be configured for contact closure or directly connected to externally powered devices. The 1 amp outputs may be configured to deliver animation data or controlled to the bit level by Cue commands.

Standard IOM-4020 Features

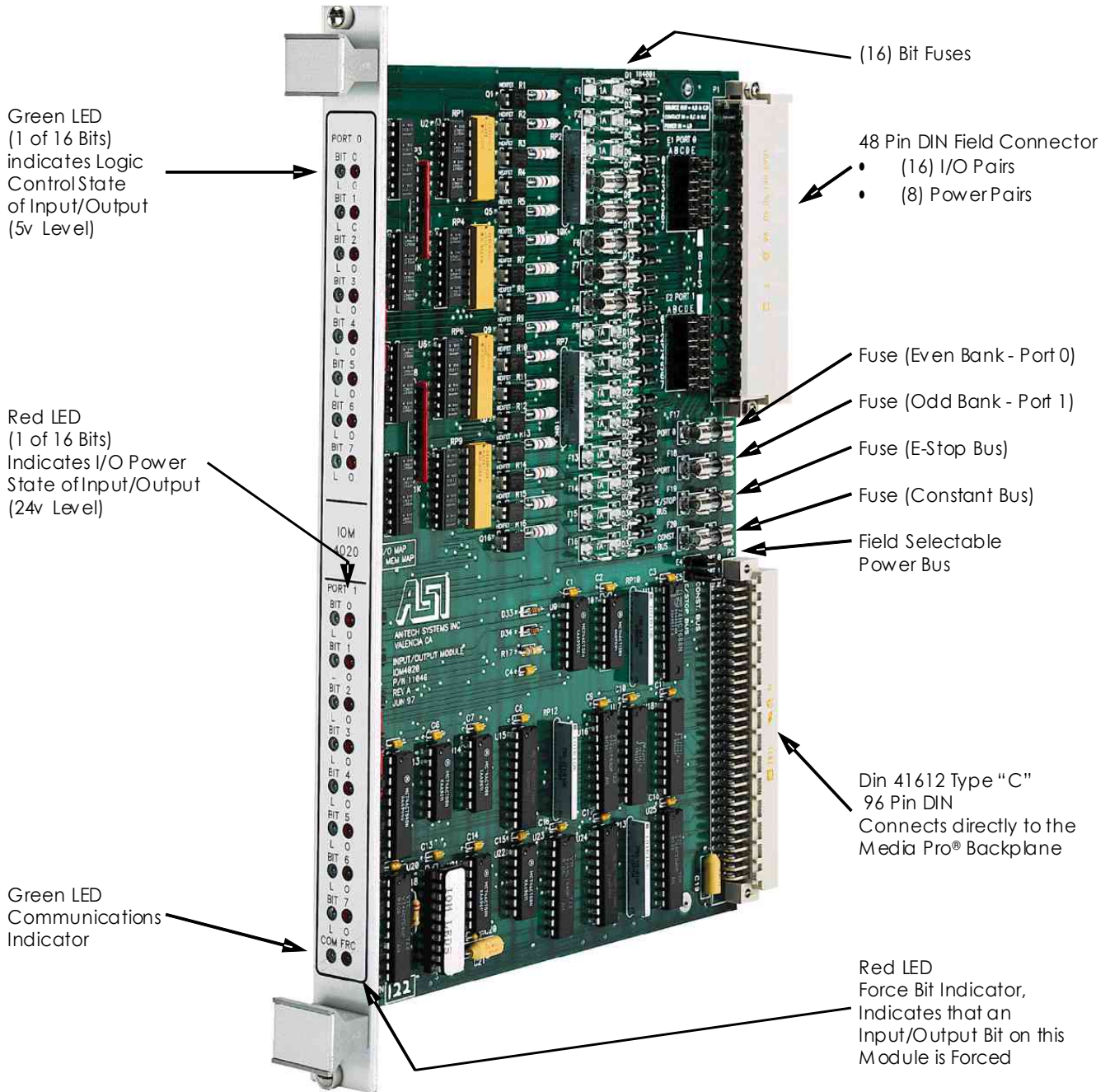
- ◆ (2) Optically Isolated 8 Bit Ports, Each Definable as Input or Output
- ◆ 24 Volts DC Input or Output Interface
- ◆ (1) Amp Fuses per I/O Point
- ◆ Logic/Field LED Indicator Per Bit

The IOM-4020 is a 16 bit 24 volt digital Input/Output module. The Input/Output module provides digital input and output expansion for the Media Pro[®] 4000 (MP 4000) system.



IOM-4020

**Media Pro® 4000 IOM-4020
Input/Output Module**



Green LED
(1 of 16 Bits)
indicates Logic
Control State
of Input/Output
(5v Level)

Red LED
(1 of 16 Bits)
Indicates I/O Power
State of Input/Output
(24v Level)

Green LED
Communications
Indicator

(16) Bit Fuses

48 Pin DIN Field Connector
• (16) I/O Pairs
• (8) Power Pairs

Fuse (Even Bank - Port 0)

Fuse (Odd Bank - Port 1)

Fuse (E-Stop Bus)

Fuse (Constant Bus)

Field Selectable
Power Bus

Din 41612 Type "C"
96 Pin DIN
Connects directly to the
Media Pro® Backplane

Red LED
Force Bit Indicator,
Indicates that an
Input/Output Bit on this
Module is Forced

Complete documentation is available for downloading at our Web site or by contacting our offices.